



WORLD HEARING DAY

3rd March, 2021

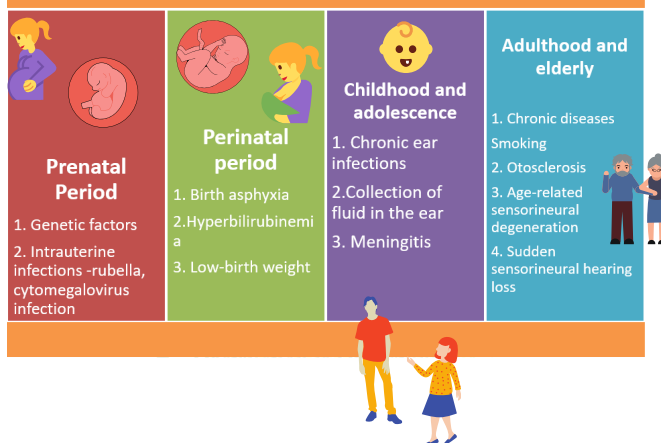
Disseminate Inform Communicate Educate
DICE Initiative

Protect your ear... Get it checked, if you struggle to hear!!

DO YOU KNOW?

- Hearing loss is one of the prevalent disabilities across the globe. Approximately, 1.5 billion people suffer from some degrees of hearing loss.
- Around 430 million people living with compromised hearing, require rehabilitation services.
- It is projected by WHO that nearly 2.5 billion people may have some degrees of hearing loss by 2050.

Causes of Hearing Loss and Deafness across life span



'DISABILING' HEARING LOSS

- 'Disabling' hearing loss refers to "hearing loss greater than 35 decibels (dB) in the better hearing ear."
- Hearing loss is more prevalent in the elderly age group. Over 25% of people above 60 years of age are affected by disabling hearing loss.
- Common causes of hearing defects in children (60%) are ear infections and birth complications that can be prevented by PUBLIC HEALTH MEASURES.

HEARING DEVELOPMENT MILESTONES

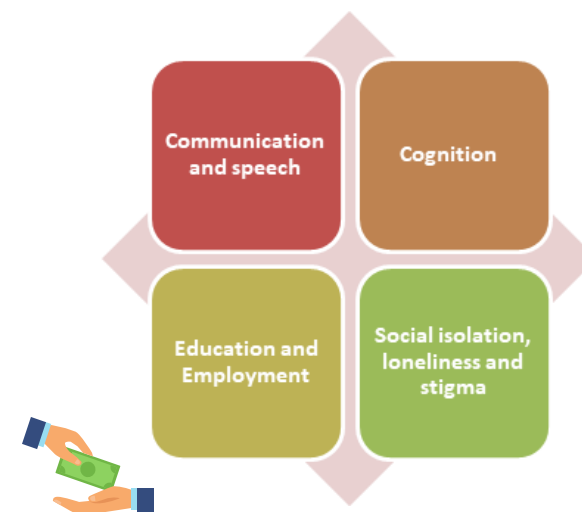
| AGE IN MONTHS | HEARING DEVELOPMENT |
|---------------|---|
| 2-6 months | Responds to sound |
| 4-6 months | When spoken to, responds by looking directly at speaker's face |
| 6-9 months | Locates source of sound |
| 9-12 months | Responds to his/her name |
| 12-15 months | Child stops activity in response to "NO" |
| 15-18 months | Follow simple one step direction "Sit down", "Give me the Ball" |
| 18-24 months | Says, at least five words consistently even if not clear |
| 24-30 months | Joins 2 words together like mama-milk, car-go |

Ministry of Health and Family Welfare, Government of India runs **"National Programme for the Prevention and Control of Deafness"**.

<https://nhm.gov.in/index1.php?lang=1&level=2&sublinkid=1051&lid=606>

Reference: Rashtriya Bal SwasthyaKaryakram. Child Health Screening and Early Intervention Services National Rural Health Mission. 2014. [cited 2021 Mar 9].

HEARING LOSS IMPACTS



As per an estimation by WHO, an annual global cost of US\$ 980 billion is due to unaddressed hearing loss.

Costs include:

- Health sector costs (excluding the cost of hearing devices),
- Educational support
- Loss of productivity, and societal costs.



For assistance, you may visit,
NATIONAL ASSOCIATION OF THE DEAF
<http://nadindia.org/>

INDIAN SIGN LANGUAGE: A Boon

A mobile application called 'INDIAN TECHNICAL SIGN LANGUAGE DICTIONARY' available on ANDROID PHONES can be used to access the portal having "signs" for thousands of words.



FHTS celebrates World Hearing Day in collaboration with

